

# WKA Engine Specification Form

125cc TAG Engine

Manufacturer Address

---

---

---

WKA Engine #
-----------------

Manufacturer	
Make	
Model	
Inlet type	
Number of pages	

## PICTURE OF ENGINE

*(insert picture of front/left here)*

*(insert picture of back/right here)*

## Official WKA Signature and Stamp

Importer



<b>TECHNICAL INFORMATION</b>
------------------------------

A	<b>CHARACTERISTICS</b>	
	Measurement	Tolerances
Volume of cylinder		
Original bore		
Theoretical maximum bore		
Stroke		
Cooling system		
Number of carburation systems		
Number of transfer ports / ducts, cylinder / sump		
Number of exhaust ports / ducts		
Shape of the combustion chamber		
Length between axes of the connecting rod		
Minimum weight of connecting rod		
Volume of combustion chamber		
Type of bearings and size	<i>(example) 6205 type</i> Big End of Con. Rod Bearing = 18 X 24 X 15 Little End of Con. Rod Bearing = 14 X 18 X 17.5 Crankshaft Bearing = 25 X 52 X 15	

B	<b>OPENING ANGLES</b>	
Exhaust		
Of exhaust ports / ducts		

C	<b>LIST OF ACCESSORIES INCLUDED</b>	
<i>(List accessories as shown below)</i>	<i>Centrifugal clutch</i>	
<i>Carburetor with butterfly ? 24</i>		
<i>Generator for battery charging</i>		
<i>Electric starter</i>		
<i>Exhaust with flex</i>		

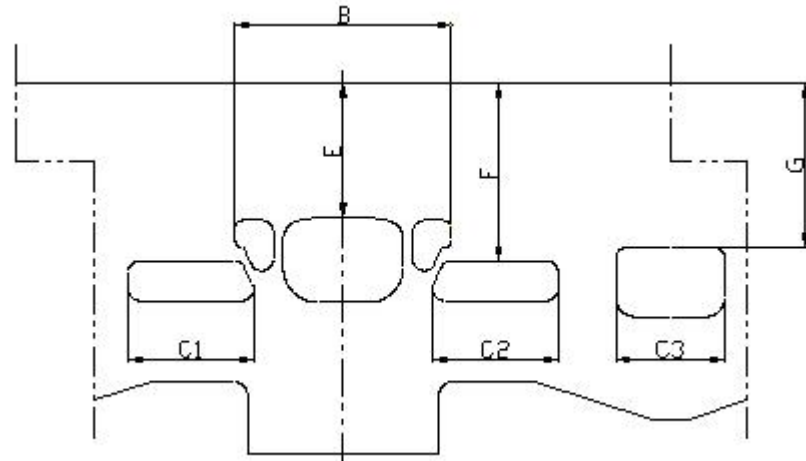
D	<b>MATERIAL</b>	
Cylinder		
Connecting rod		
Crankshaft		
Head		
Liner		
Crankcase		
Piston		
Piston Ring		



**DRAWING OF THE CYLINDER DEVELOPMENT**

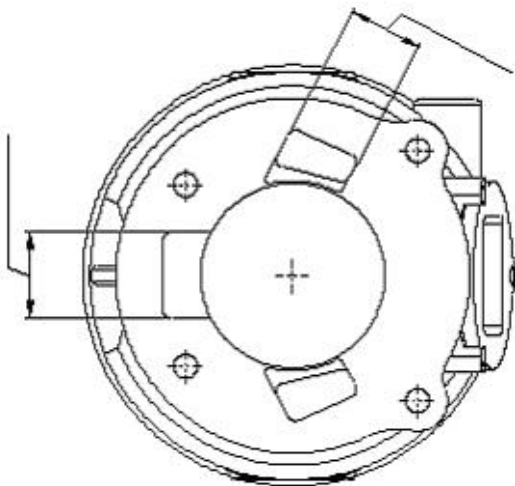
*(Insert drawing here)*

Chord reading	
B	
C1=C2	
C3	
Angular reading by inserting a 0.2mm gauge	
E	
F	
G	



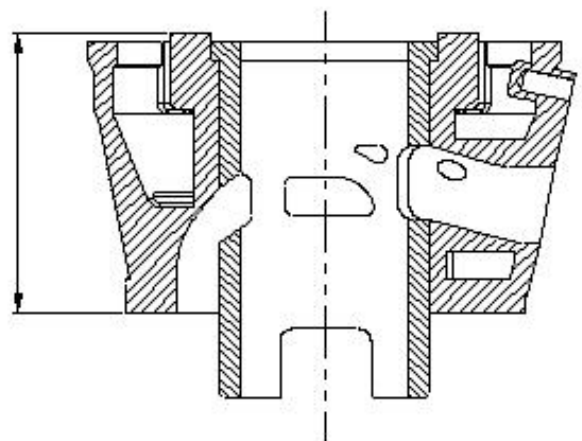
**DRAWING OF THE CYLINDER BASE**

*(Insert drawing here)*



**CYLINDER SECTION VIEW**

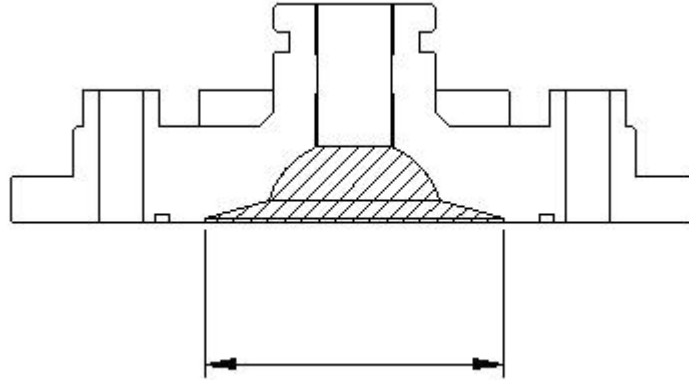
*(Insert drawing here)*





**DRAWING OF THE CYLINDER HEAD AND THE COMBUSTION CHAMBER**

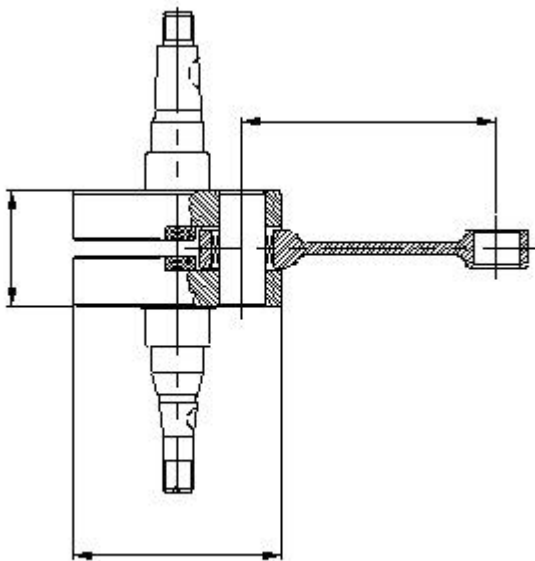
*(Insert drawing here)*



Combustion chamber volume =      c.c. minimum

**DRAWING OF THE CRANKSHAFT**

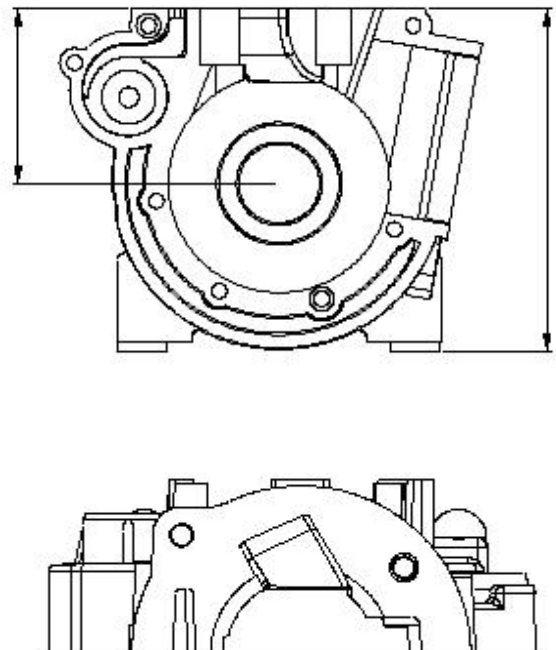
*(Insert drawing here)*



Complete weight =      Tolerance= ±

**DRAWING OF THE INSIDE OF SUMP**

*(Insert drawing here)*





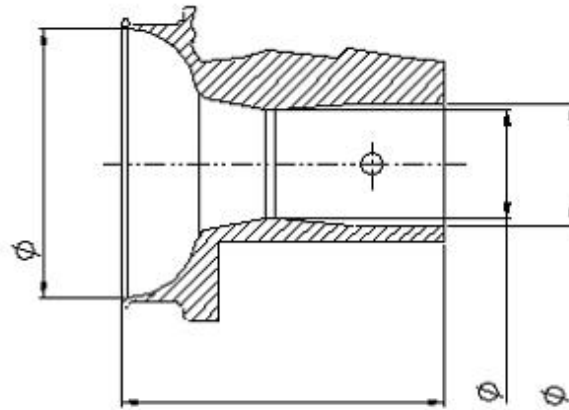
<b>IGNITION</b>	
Manufacturer	
Model Number	
Rotation	
Description	
<b>PHOTO OF IGNITION</b>	<b>PHOTO OF COIL</b>
<i>(insert photo of inside here)</i>	<i>(Insert photo here)</i>
<i>(insert photo of outside here)</i>	



**CARBURETOR DIMENSION**

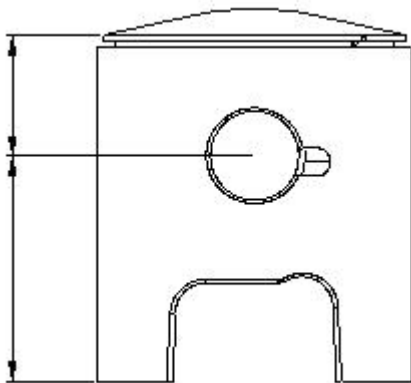
*(Insert drawing here)*

Item	Measure	Tolerance
A		
B		
C		
D		
E		
F		



**PISTON**

*(Insert drawing here)*

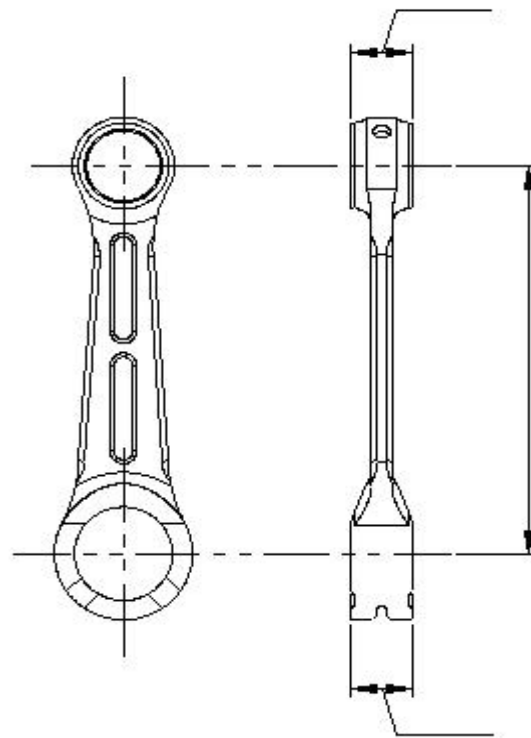


Weight=

Tolerance= ±

**CONNECTING ROD**

*(Insert drawing here)*



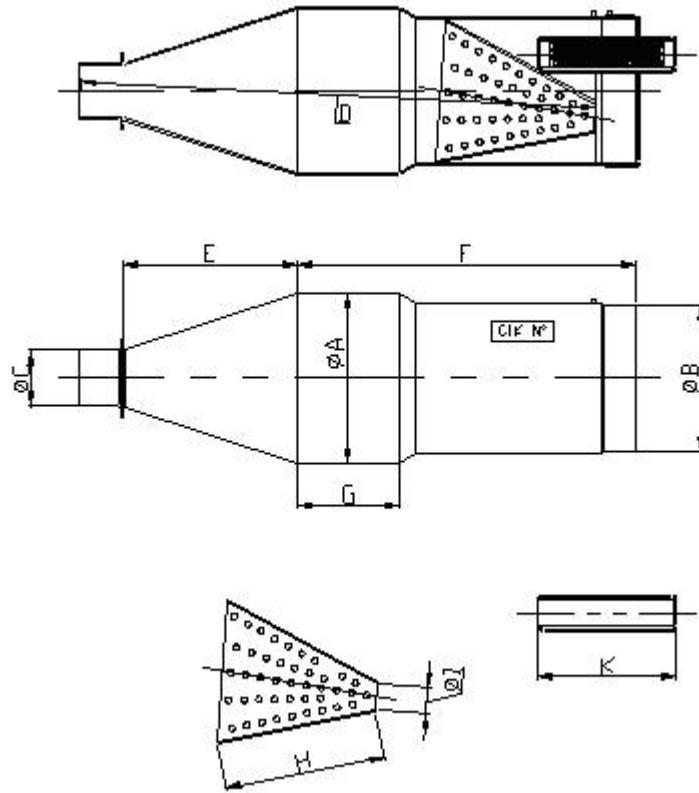
Weight=

Tolerance= ±



**DRAWING OF THE SILENCER AND IT'S COMPONENTS**

*(Insert drawing here)*



The end parts of the silencer must have two soldered pairs of lugs (one pair at the top and one pair at the bottom) to allow for fixing of seals by the Organizer so that the silencer may be opened during the competition

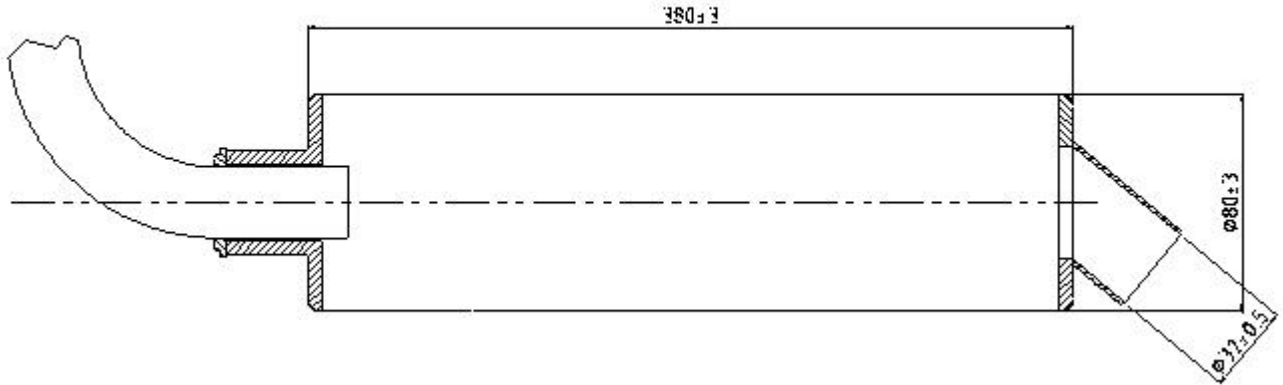
Measurements:

- A:
- B:
- C:
- D:
- E:
- F:
- G:
- H:
- I:
- J:
- K:



**DRAWING OF THE SILENCER**

*(Insert drawing here)*



**DRAWING OF THE CLUTCH**

*(Insert drawing of clutch used)*

Item	Weight	Tolerance
A		
B		
C		

